



1505/7 Rider Boulevard RHODES NSW

2 2 1

Please contact Jasper on 0414 828 999 for private inspection!

This contemporary lifestyle themed 2-bedroom corner apartment presented by Mirvac Pinnacle is perfect for your home, it offers 270 degree panoramic skyline spectacle overlooking the water and city view of Sydney at South East facing, conveniently located at the heart of Rhodes, walking distance to Rhodes train station and Rhodes Shopping Mall with everything you need at your door step.

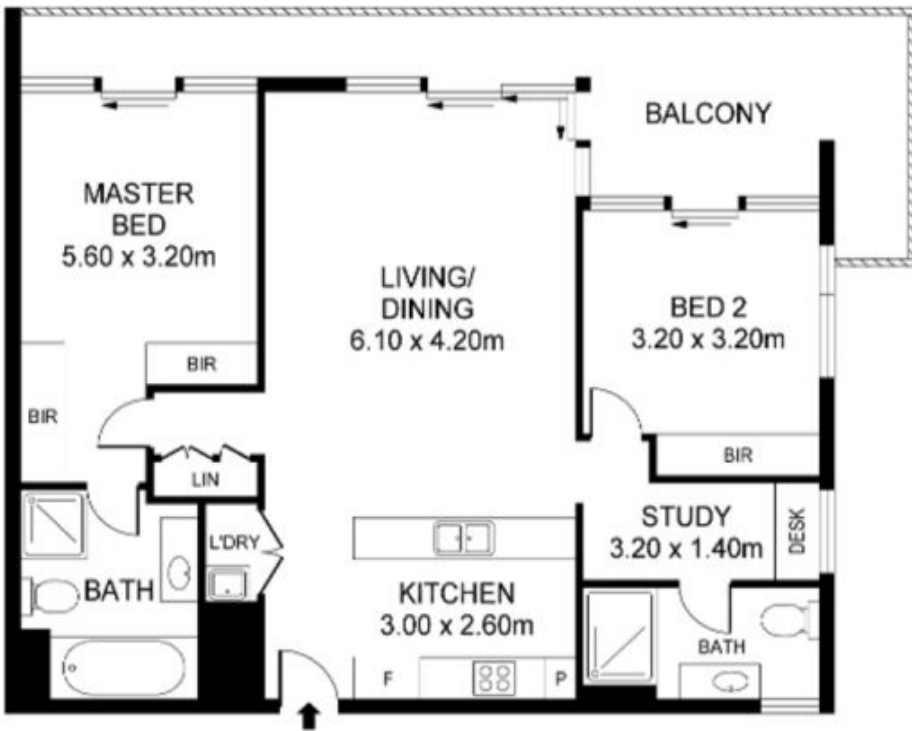
- Two bedrooms with built ins, modern finishing's
- Ducted air throughout, extra study/media area
- Built in microwave and dishwasher, undisturbed views to the city

Type : Apartment
View : <https://www.viprealstate.com.au/sale/nsw/inner-west/rhodes/residential/apartment/8646677>

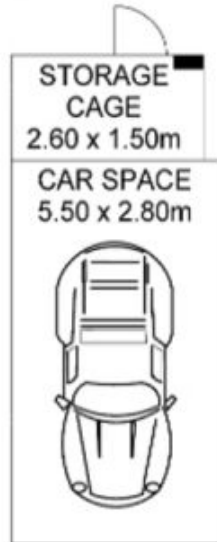


Jasper Tan
02 9212 0000

[For full version visit the website](https://www.viprealstate.com.au)



Internal Area	88sqm
Balcony Area	19sqm
Car Space Area	15sqm
Storage Cage Area	4sqm
Total Area	122sqm



1505/7 RIDER BLVD, RHODES

Disclaimer: Please note that while the information contained in this floor plan is provided by reliable sources, we cannot guarantee its accuracy. It is intended as a guide only. Interested parties should rely on their own enquiry. Drawing not to scale. Dimensions are approximate.