



206/6 Bay Street BOTANY NSW

2 2 2

Placed in the most convenient locale of Botany, enjoying sunlit aspects is this beautifully presented home offering a wonderfully comfortable and convenient lifestyle. It is just next to the cafes, restaurants, and the footbridge to shopping Centre, transport to the CBD and schools.

Type : Apartment

Price : \$ 850,000

View : <https://www.viprealestate.com.au/sale/nsw/eastern-suburbs/botany/residential/apartment/8646681>

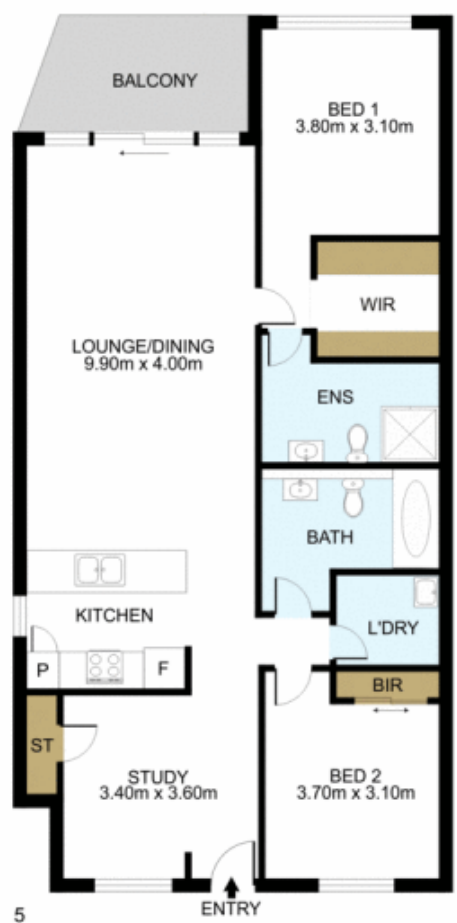
This apartment is a unique residential complex that offers a perfect blend of privacy, security, and lifestyle harmony. The functional floor plans and high-quality fixtures and fittings are meticulously designed to meet the highest standards of comfort and luxury.

The interiors of the complex are carefully crafted to provide a comfortable and peaceful living experience.



Jasper Tan
02 9212 0000

[For full version visit the website](https://www.viprealestate.com.au)



STORAGE
1.20m x 1.10m



DISCLAIMER: THIS IS FOR ILLUSTRATIVE PURPOSES ONLY. ALL DIMENSIONS ARE APPROXIMATE AND IT DOES NOT CONSTITUTE PART OF ANY LEGAL DOCUMENTS.

ADDRESS: 206/6 Bay Street, Botany